

# Our Partners





# Help Conquer Caulerpa!

Paihia Public Meeting



# The Conquer Caulerpa Trust

“Our sole purpose is to Conquer  
Caulerpa from Northland”



# About the Conquer Caulerpa Trust

- We are a new Charitable Trust established for the sole purpose of **Conquering Caulerpa from Northland**
- A registered Charity, enabling donors to claim back on donations
- A friendly partner, working in cooperation with Mana Whenua, the community, Councils, businesses and industries



# Our trustees are locals



Liz Witehira



Steve Te Tai



Claudia Lyons



Michelle Elboz



# Why the Trust was established

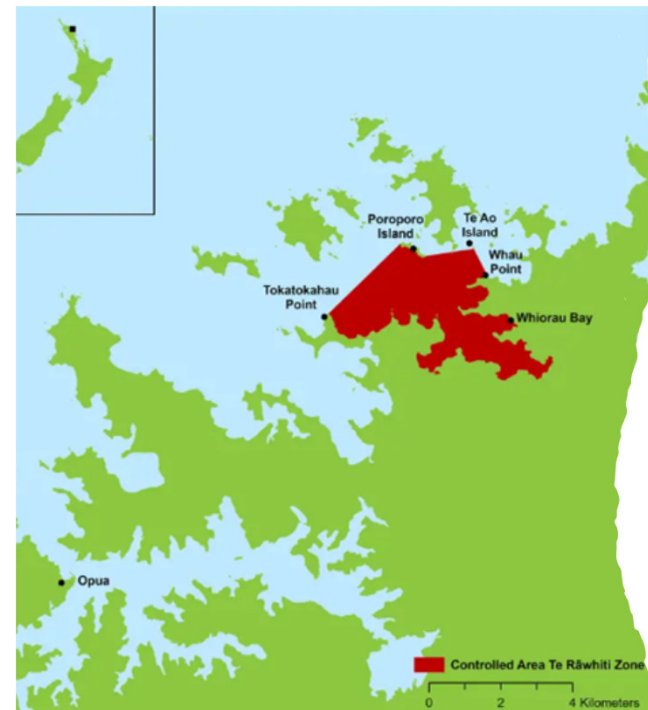
Caulerpa competes with other species, and will spread **rapidly** in Northland's climate and clear waters

We take practical steps to eliminate Caulerpa

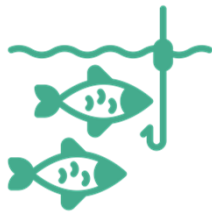
The largest meadow of Caulerpa is in Omakiwi Bay, a popular anchoring location.

**Action is needed to survey other parts of Northland** to conquer new patches and educate people

Community Collaboration increases success



# What the risks are



Our ability to harvest from the sea and enjoy the natural environment will rapidly decline



Our business economy, tourism and fishing will decline



The natural aquatic environment and ecosystems will become uninhabitable for many species – over time



# What we do

“We are launching our Conquer  
Caulerpa Programme”





# Our Conquer Caulerpa Programme



## Raise money

Raise funds to remove Caulerpa from the ocean



## Build Partnerships

Collaborate and build partnerships to join the cause



## Conduct surveys

Conduct underwater dive surveys of high boat anchorage sites



## Rapid Response

Respond quickly to sites where Caulerpa is by covering the weed with benthic mats



## Educate

Educate the community about Caulerpa and what to look for



# Collaborating with Mana Whenua



The trust wants to work collaboratively with iwi, hapu and marae along Northland's coast

We collaborate with mana whenua to be guided by local tikanga

Our goal is to achieve optimal outcomes for everyone, and to protect taonga

We work with the willing. Iwi and hapu across Te Taitokerau are reaching out to collaborate



# Our desired outcomes

A vibrant Northland:

- Our rich culture and heritage
- Viable businesses contributing to the region's economy
- Ability to continue our interactions and enjoyment with the ocean
- A pest free aquatic environment where wildlife can thrive.



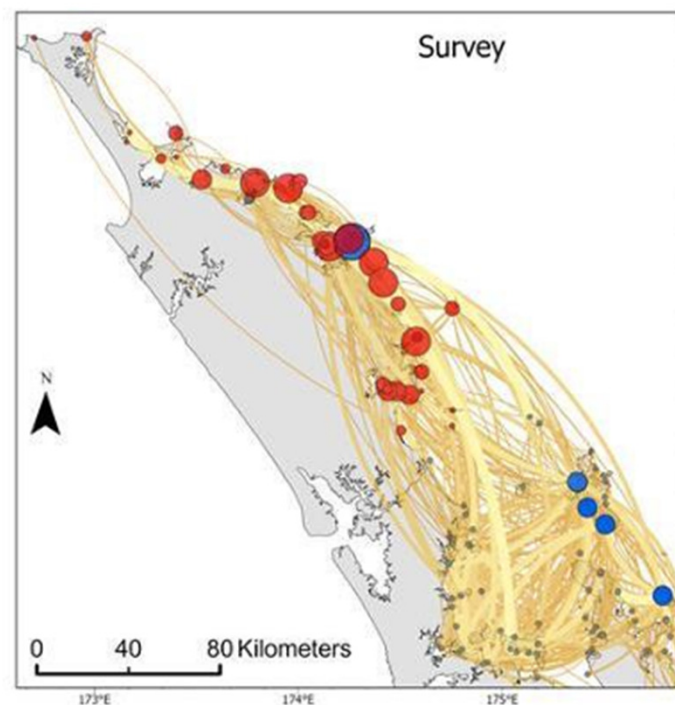
# Our Survey & Rapid Response Programme

“Find it and destroy it”

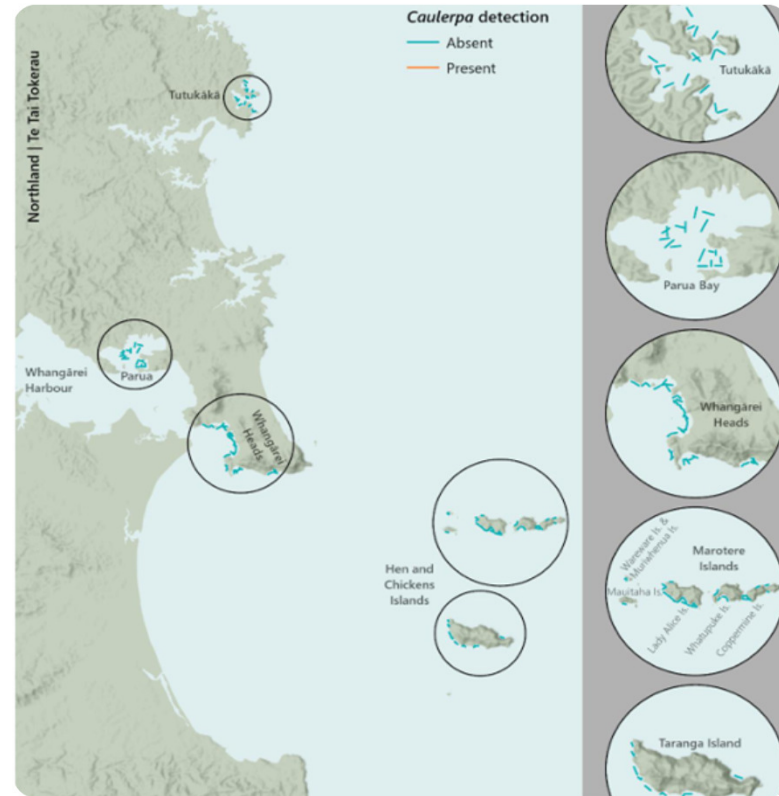
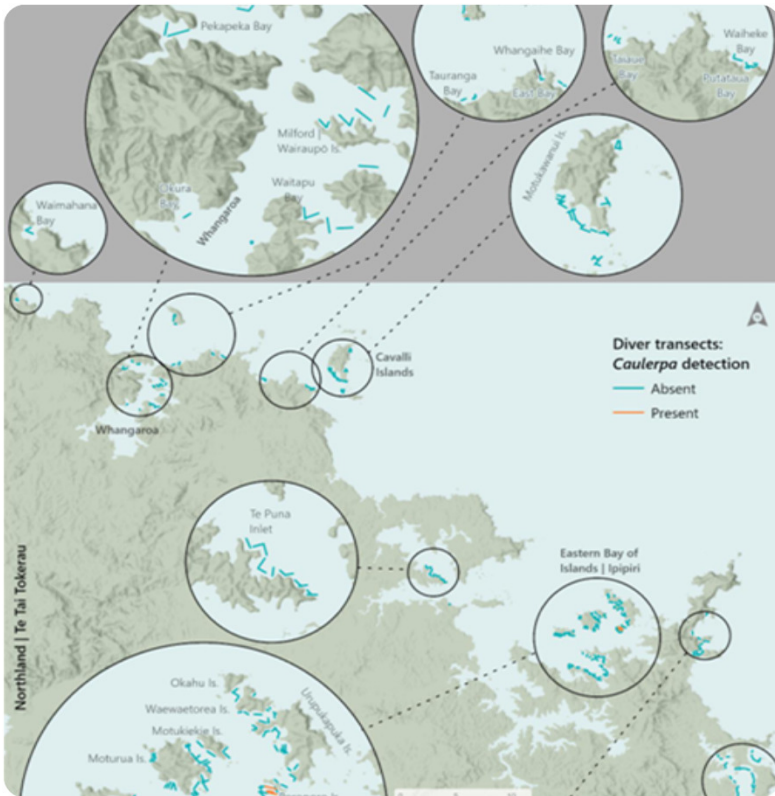


# Popular Anchorage Points across Tai Tokerau

- Cawthron Institute AIS data shows where boats commonly anchor
- Larger dots show areas where higher numbers of vessels are anchoring
- Red dots indicate areas that have not been surveyed (or if surveyed, no *Caulerpa* was found)
- Blue dots indicate areas where *Caulerpa* has been found
- Our surveillance and Rapid Response work aims to manage these pathways **to stop the spread of *Caulerpa* across the coast.**



# Capturing data

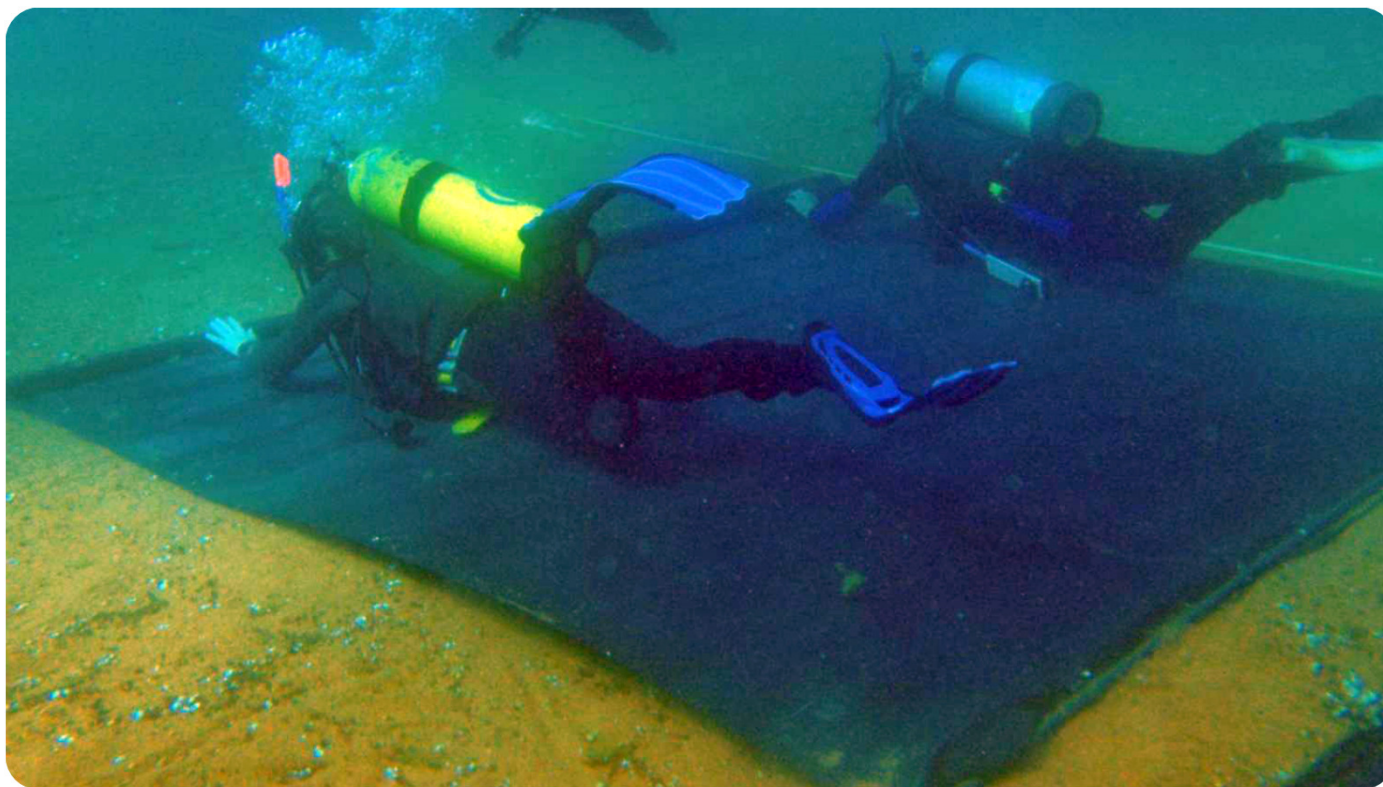


We capture data and store it to a single source of information for the region



# Underwater treatment tools

Divers laying benthic mat to deprive Caulerpa of light



# Our dive experts



Project Management



Survey Coordination



Data Collection



Rapid Response





# Underwater surveillance & rapid response



Northern Divers NZ are qualified commercial divers with extensive global experience

They are passionate to collaborate with communities and Mana Whenua

They have networks and technical surveying skills to deliver

They can mobilise very quickly, across Northland

**Working local makes our funds go further!**



# Education

We engage community to raise awareness and encourage behaviour change.

Boat ramps are a great place to inform people about Caulerpa locations and to encourage people to report Caulerpa if they discover it

Working in the classroom with school students who are very interested to learning about Caulerpa



# Partnerships

Are critical to the success of eliminating Caulerpa.

We are a community with skills, knowledge and innovative ideas

Every contribution makes a difference!



# How you can help

“It’s a problem for all of us, not just some  
of us”



Caulerpa Meadow Omakiwi Bay, Te Rawhiti.

**The  
consequences if  
we do nothing!**



# Our Fundraising Goal

**\$1,000,000**



**Please Give a Little**



# Other ways to support



In-kind



Sharing information



Connecting us to others



# We appreciate your time!

Check out our website, it has lots of information  
[www.conquercaulerpa.nz](http://www.conquercaulerpa.nz)

- Email us: [admin@conquercaulerpa.nz](mailto:admin@conquercaulerpa.nz)
- Find us on Facebook!

## Join us!

- Volunteers & Sponsors – All welcome
- **PLEASE SHARE OUR FUNDRAISING PAGES**





# Our Partners

